

Apo-Xenoplan 2.8/16

Compact C-Mount anti-shading lenses for up to 12 megapixel 1.3" sensor with micro-lens on the pixel. This 16 mm focal length lens covers an image circle of 24 mm, which enables to achieve a large field of view at a short working distance.

The lockable focus and iris setting, a robust housing and the 400 nm to 1000 nm broadband AR coating makes this lens ideal for measurement applications in factory automation.

The series of anti-shading lenses for 1.3" sensor is completed with lenses of 20 mm, 24 mm, 35 mm and 50 mm focal length.



Apo-Xenoplan 2.8/16

Key features

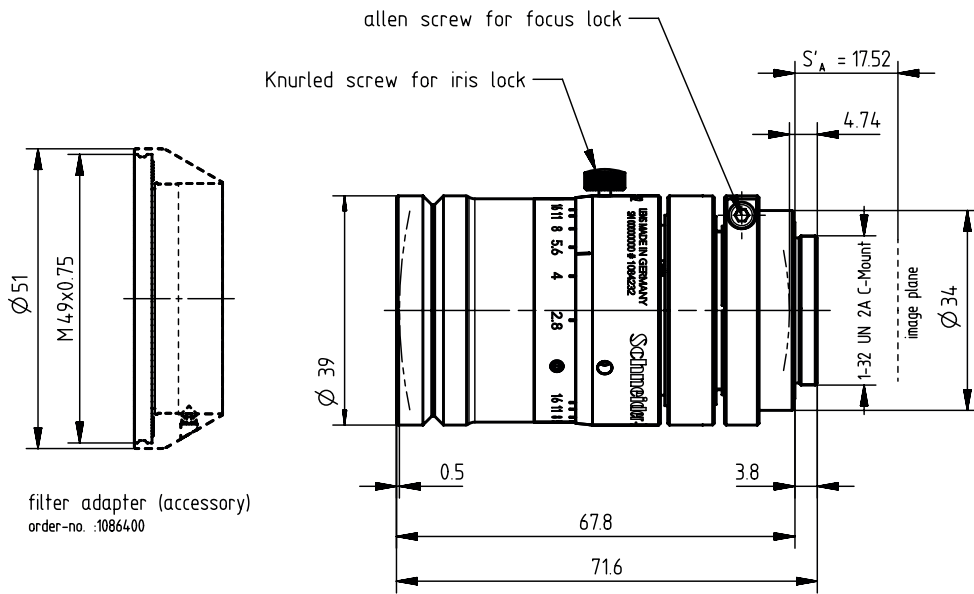
- Anti-shading lens for up to 1.3" 12 megapixel sensor with micro-lenses
- Covers 24 mm image circle
- 400 - 1000 nm broadband AR coating
- Focus and iris setting lockable

Applications

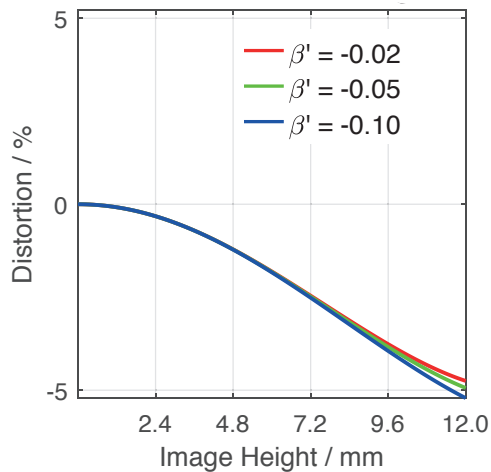
- 3D measurement
- 2D measurement
- Metrology

| Name | Apo-Xenoplan 2.8/16 |
|------------------------------|-------------------------|
| Type | -0002 |
| Focal Length [mm] | 16 |
| Magnification | -0.1 |
| Image circle [mm] | 24 |
| Resolution [μm] | 3.65 |
| F/# range | 2.8 ... 16 |
| NA | 0.18 |
| Interface | C-Mount |
| Working distance [mm] | 152 |
| AoV [°] | 72 |
| Focus control | manual |
| Transmission [nm] | 400 - 1000 |
| Filter thread [mm] | M49 x 0.75 with adapter |
| Dimensions L x D [mm] | 71.6 x 39.0 |

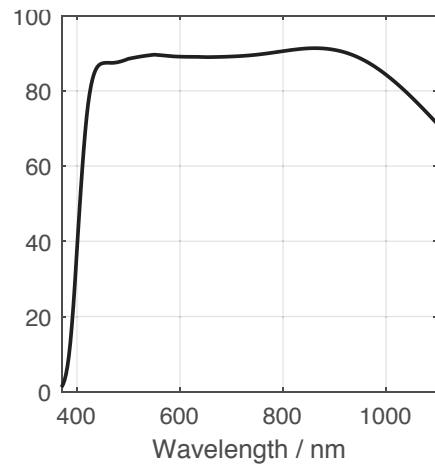
| Name | Apo-Xenoplan 2.8/16 |
|--------------------------|---------------------|
| Weight [g] | 204 |
| Storage temperature [°C] | -25 ... +70 |
| f'_{eff} [mm] | 16.37 |
| S_F [mm] | 13.14 |
| $S'_{F'}$ [mm] | 17.93 |
| HH' [mm] | 38.42 |
| β'_P | 3.427 |
| S_{EP} [mm] | 17.92 |
| S'_{AP} [mm] | -38.16 |
| Σd [mm] | 66.36 |
| ID | 1084232 |



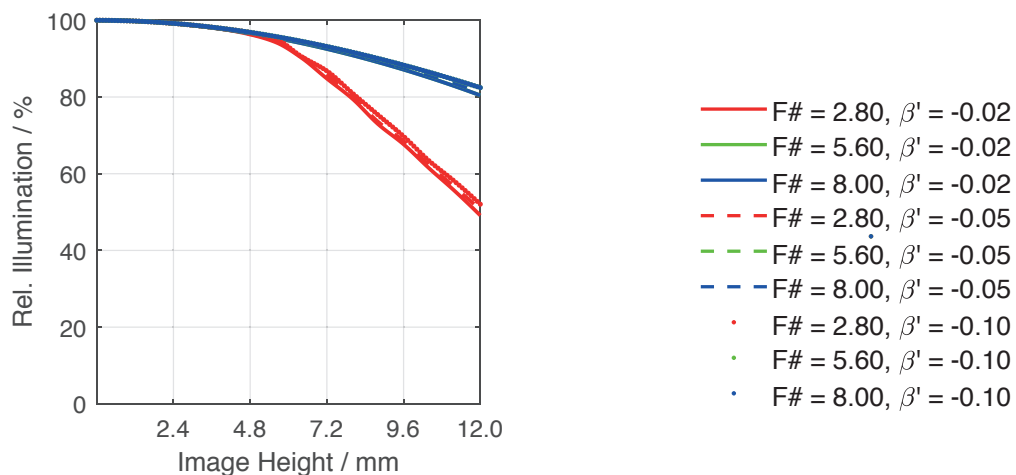
Distortion vs. Image Height



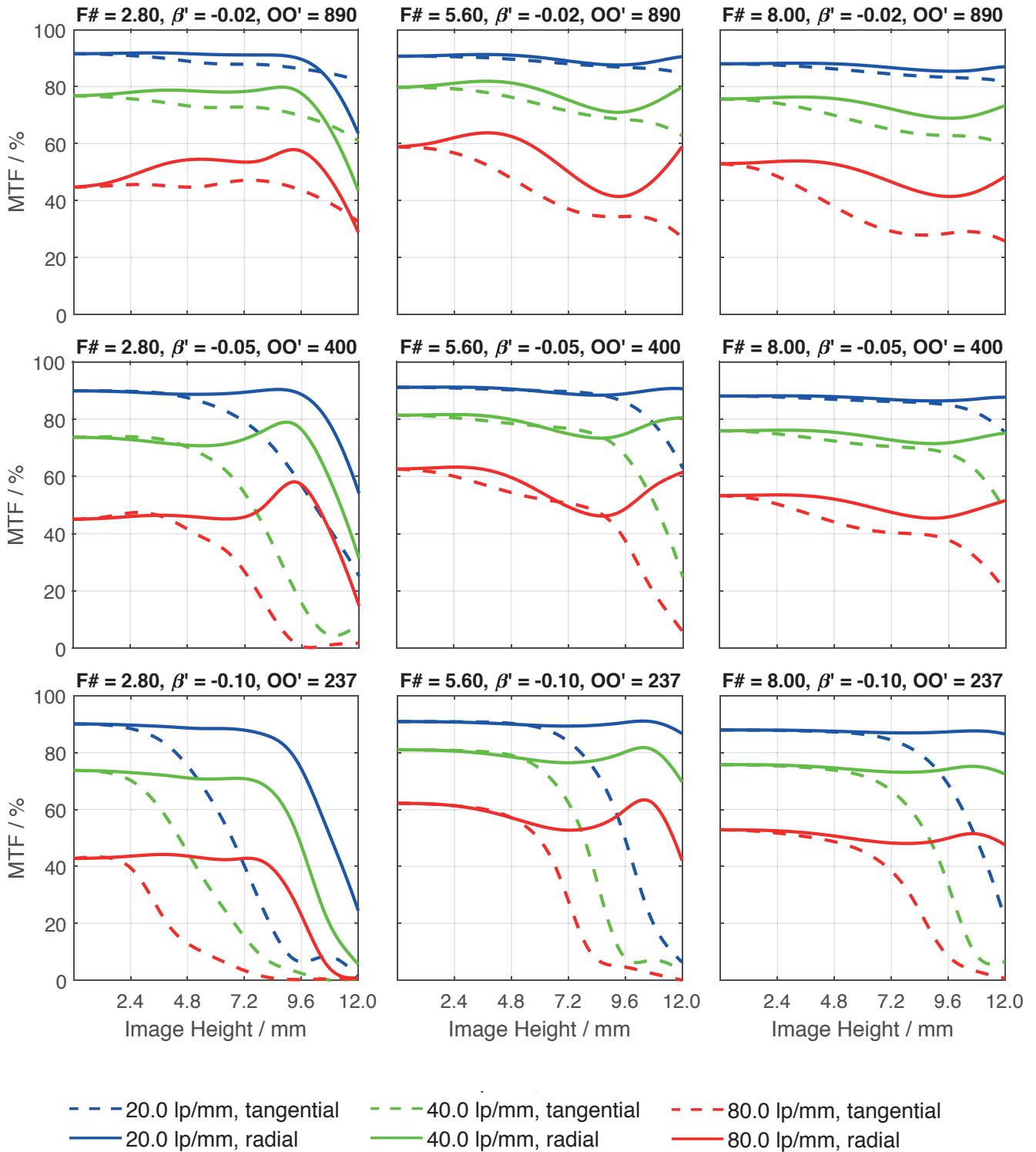
Transmittance vs. Wavelength



Relative Illumination vs. Image Height



| Spectrum Name | VIS | | | | | |
|------------------|-----|-----|-----|-----|-----|-----|
| Wavelengths [nm] | 425 | 475 | 525 | 575 | 625 | 675 |
| Weights | 8 | 16 | 23 | 22 | 19 | 13 |



| Accessories | Mount | Length | ID |
|---------------|---------------------------|--------|---------|
| Adapter | CS-Mount Adapter | 5 mm | 25081 |
| | C-Mount / M42 x 1 Adapter | - | 1075817 |
| Ext. Tube | C-Mount | 5 mm | 39316 |
| | C-Mount | 8 mm | 39315 |
| | C-Mount | 10 mm | 39312 |
| Filter Holder | M49 x 0.75 | - | 1086400 |

Get more information

Contact our local offices



Headquarter Germany

Jos. Schneider Optische Werke GmbH

Ringstraße 132

55543 Bad Kreuznach

☎ +49 671 601 205

✉ cs@schneiderkreuznach.com

www.schneiderkreuznach.com

Offices Worldwide

China

☎ +86 755 8832 1170

✉ shawn.liu@schneider-asiapacific.com

North America

☎ +1 800 645 7239 (East Coast)

☎ +1 800 228 1254 (West Coast)

✉ info@schneideroptics.com

Singapore

☎ +65 9488 0062

✉ thongv@schneiderkreuznach.com