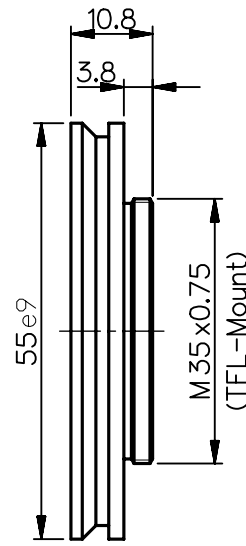
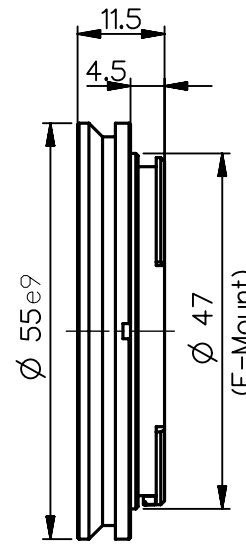


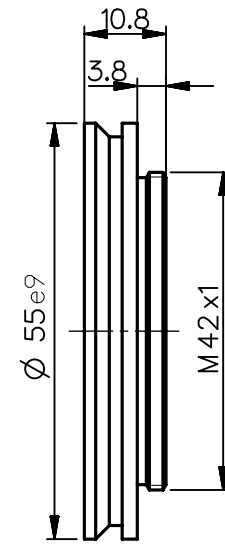
2408-009-106-00
C CA 0.8



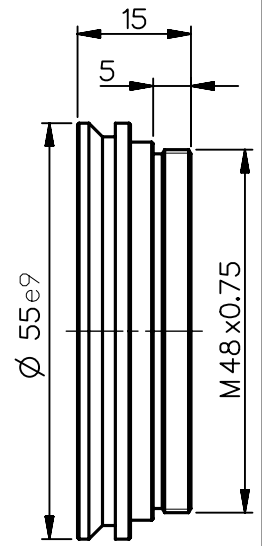
2408-009-174-00
TFL CA 0.8



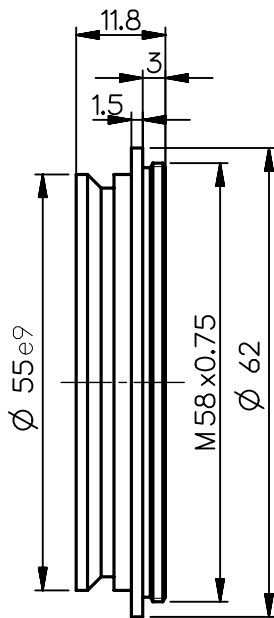
2408-009-142-00
F CA 0.8



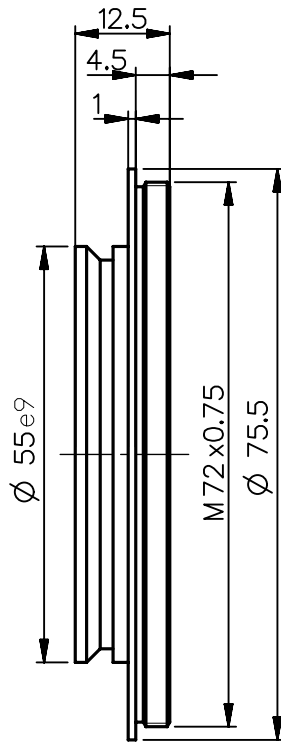
2408-009-119-00
M42x1 CA 0.8



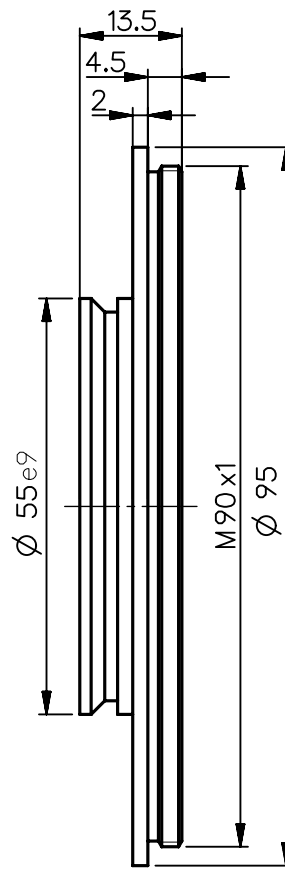
2408-009-148-00
M48x0.75 CA 0.8



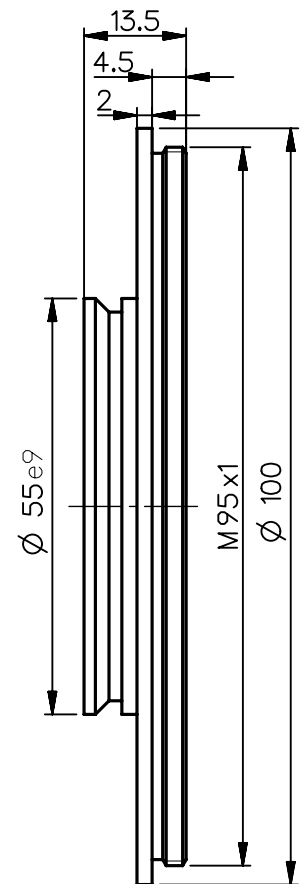
2408-009-132-00
M58 CA 2.6



2408-009-134-00
M72 CA 1.8



2408-009-166-00
M90 CA 2.8



2408-009-155-00
M95 CA 2.8

Schutzvermerk "DIN ISO 16016" beachten	EU-D		AL-T1A		US-D		US-ML		not export controlled	
							PDM-Status Freigabe		-	
	Rev.	Aenderung	Datum	Freigabe	zul. Abweichung für Mass, Form & Lage		Maßstab 1:1			
	a	Neuausg			ISO 2768-mH		Werkstoff			
	b	10-132	02.11.10	Labarte	Oberfläche black, anodised		Benennung Camera adapter			
	c	12-0185	12.04.12	Schuber						
	d	14-0184	21.10.14	Schiffe						
	e	15-0737	14.09.15	Boll						
	f	16-0620	29.09.16	Boll						
	g	20-0407	27.04.20	Denk	Tolerierung ISO 8015		Erster-Datum Name			
						stellung 29.04.09 Labarte				
						Prüfung 29.04.09 Schaeffler				
DIN A 4		Alle Maße in mm, inklusive Oberflächenbehandlung				Zeichnungsnummer		Blatt 1		
						2408-009-100-41-0002g		von 1		
						Ersatz für				