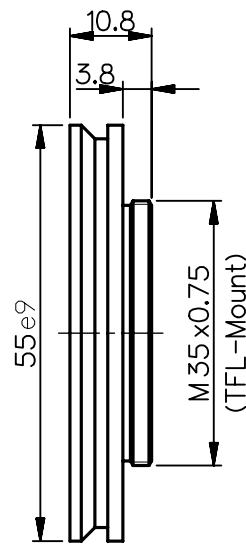
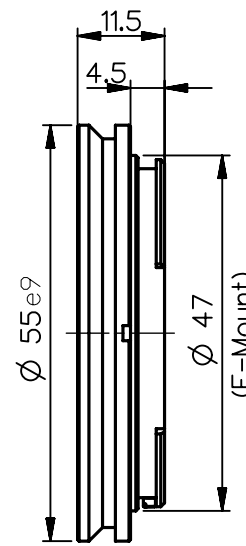


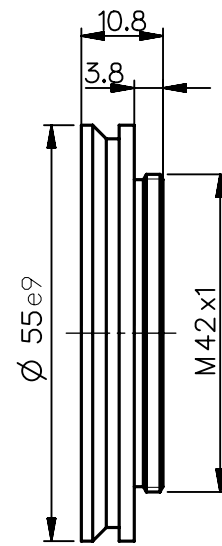
2408-009-106-00
C CA 0.8



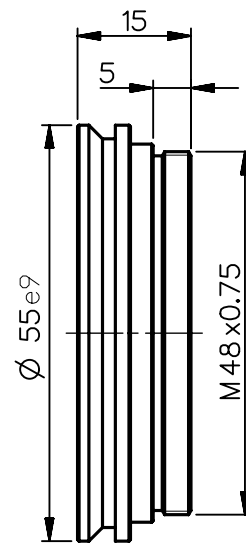
2408-009-174-00
TFL CA 0.8



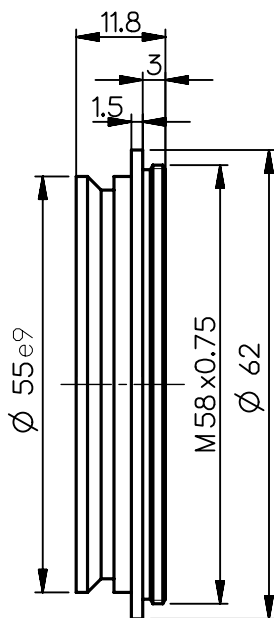
2408-009-142-00
F CA 0.8



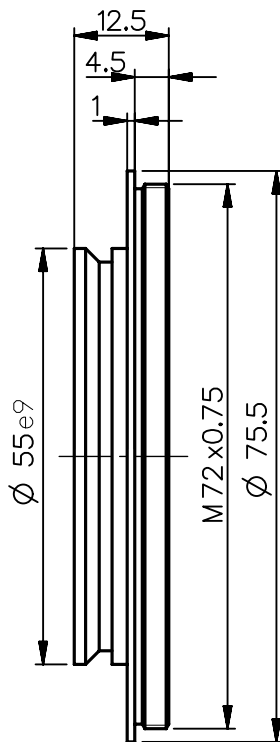
2408-009-119-00
M42x1 CA 0.8



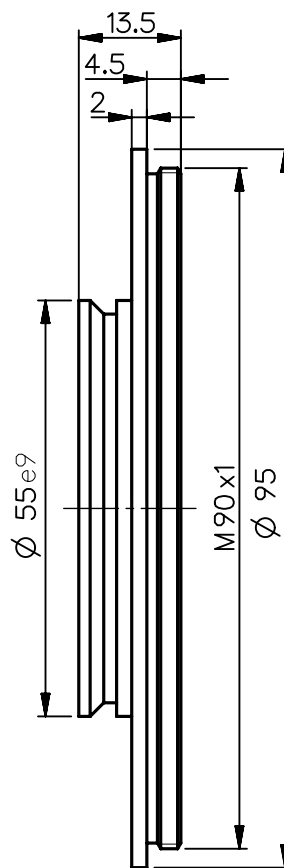
2408-009-148-00
M48x0.75 CA 0.8



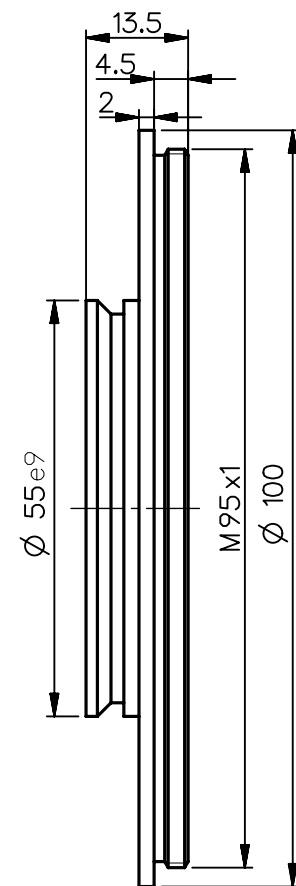
2408-009-132-00
M58 CA 2.6



2408-009-134-00
M72 CA 1.8



2408-009-166-00
M90 CA 2.8



2408-009-155-00
M95 CA 2.8

NX Schutzvermerk "DIN ISO 16016" beachten DIN A 4	EU-D		AL-T1A		US-D		US-ML		not export controlled		
							PDM-Status Freigabe		-		
	Rev.	Aenderung	Datum	Freigabe	zul. Abweichung für Mass, Form & Lage ISO 2768-mH	Oberfläche black, anodised	Maßstab 1:1				
	a	Neuausg					Werkstoff				
	b	10-132	02.11.10	Labarte	Tolerierung ISO 8015		Benennung Camera adapter				
	c	12-0185	12.04.12	Schuber							
	d	14-0184	21.10.14	Schiffe							
	e	15-0737	14.09.15	Boll	Erster-	Datum	Name	Zeichnungsnummer		Blatt 1 von 1	
	f	16-0620	29.09.16	Boll	stellung	29.04.09	Labarte				
	g	20-0407	27.04.20	Denk	Prüfung	29.04.09	Schaeffler	2408-009-100-41-0002g			
Alle Maße in mm, inklusive Oberflächenbehandlung								Ersatz für			