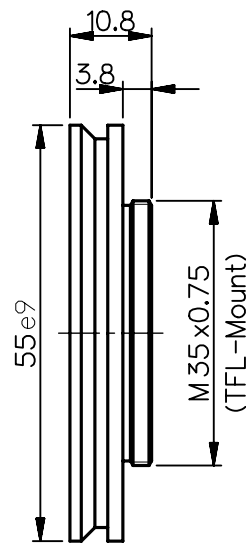
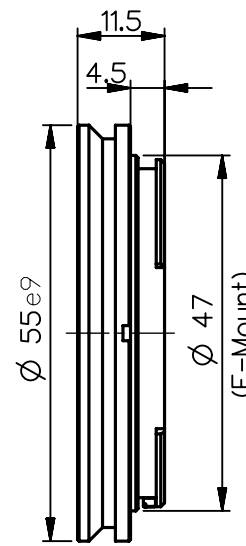


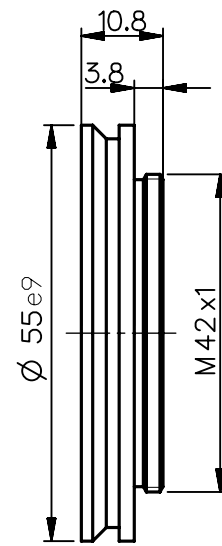
2408-009-106-00  
C CA 0.8



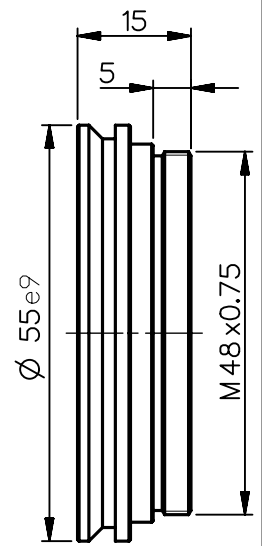
2408-009-174-00  
TFL CA 0.8



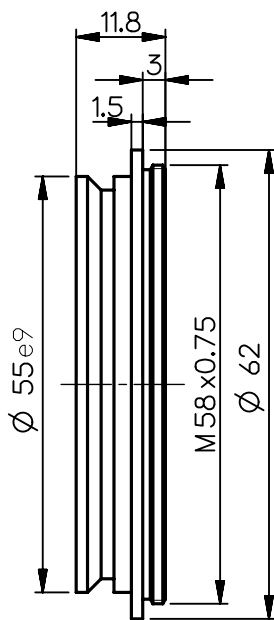
2408-009-142-00  
F CA 0.8



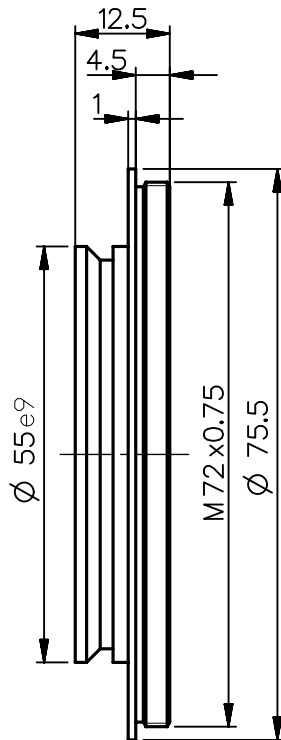
2408-009-119-00  
M42x1 CA 0.8



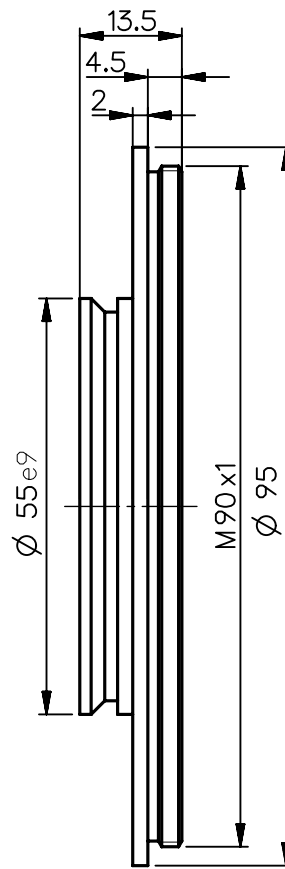
2408-009-148-00  
M48x0.75 CA 0.8



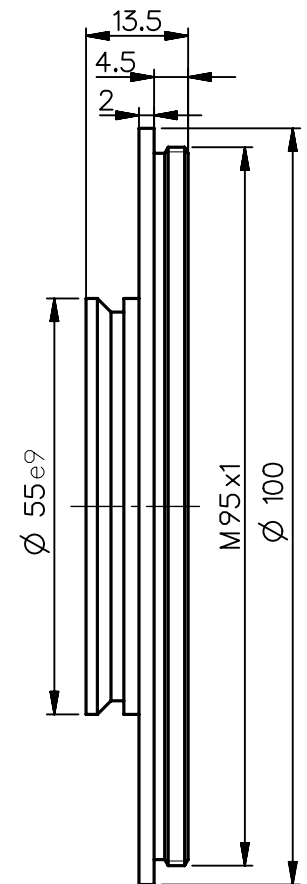
2408-009-132-00  
M58 CA 2.6



2408-009-134-00  
M72 CA 1.8



2408-009-166-00  
M90 CA 2.8



2408-009-155-00  
M95 CA 2.8

NX Schutzvermerk "DIN ISO 16016" beachten DIN A 4	EU-D		AL-T1A		US-D		US-ML		not export controlled	
							PDM-Status Freigabe		-	
	Rev.	Aenderung	Datum	Freigabe	zul. Abweichung für Mass, Form & Lage		Maßstab 1:1			
	a	Neuausg			ISO 2768-mH		Werkstoff			
	b	10-132	02.11.10	Labarte	Oberfläche black, anodised		Benennung Camera adapter			
	c	12-0185	12.04.12	Schuber						
	d	14-0184	21.10.14	Schiffe					Tolerierung ISO 8015	
	e	15-0737	14.09.15	Bo11					Erster-Datum Name	
	f	16-0620	29.09.16	Bo11					stellung 29.04.09 Labarte	
	g	20-0407	27.04.20	Denk	Prüfung 29.04.09 Schaeffler		Zeichnungsnummer		Blatt 1	
						2408-009-100-41-0002g		von 1		
						Ersatz für				

