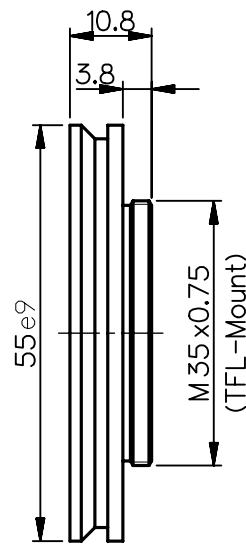
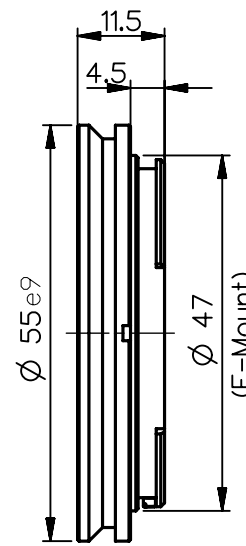


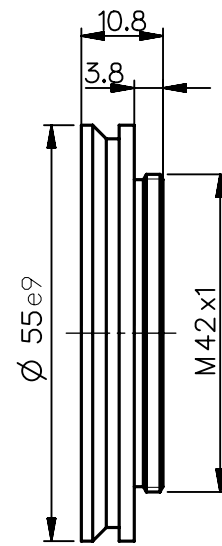
2408-009-106-00  
C CA 0.8



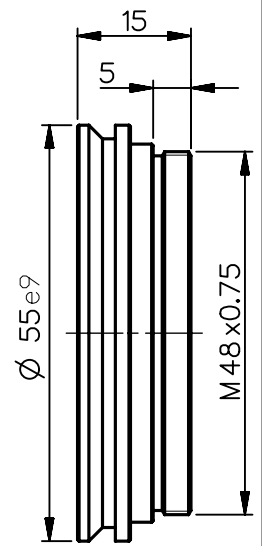
2408-009-174-00  
TFL CA 0.8



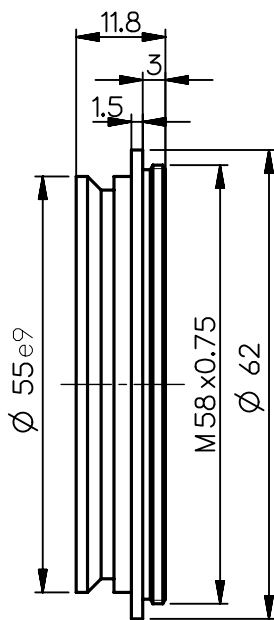
2408-009-142-00  
F CA 0.8



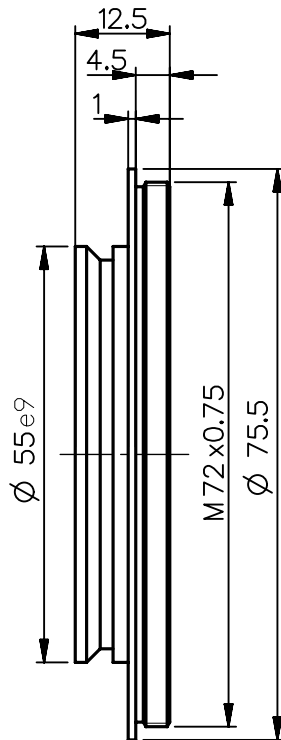
2408-009-119-00  
M42x1 CA 0.8



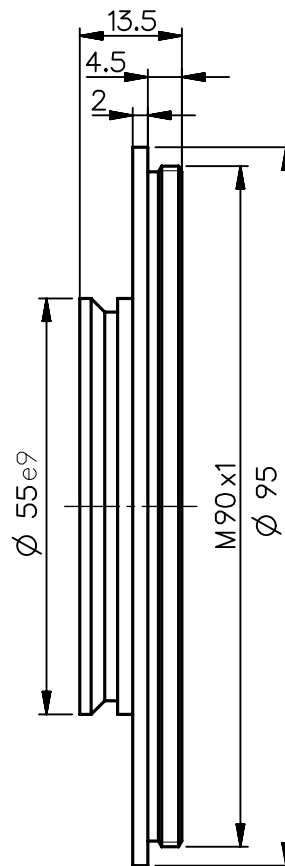
2408-009-148-00  
M48x0.75 CA 0.8



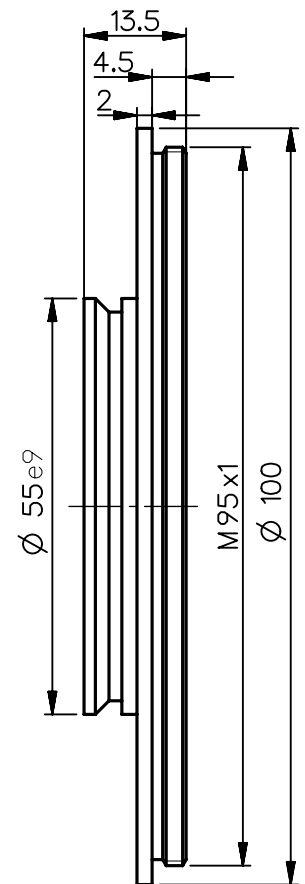
2408-009-132-00  
M58 CA 2.6



2408-009-134-00  
M72 CA 1.8



2408-009-166-00  
M90 CA 2.8



2408-009-155-00  
M95 CA 2.8

NX	EU-D		AL-T1A		US-D		US-ML		not export controlled	
							PDM-Status Freigabe		-	
Schutzvermerk "DIN ISO 16016" beachten	Rev.	Aenderung	Datum	Freigabe	zul. Abweichung für Mass, Form & Lage	Oberfläche	Maßstab 1:1		Benennung Camera adapter	
	a	Neuausg					ISO 2768-mH	black, anodised		
	b	10-132	02.11.10	Labarte	Tolerierung	ISO 8015	Erster-Datum-Name stellung 29.04.09 Labarte		Prüfung 29.04.09 Schaeffler	
	c	12-0185	12.04.12	Schuber						
	d	14-0184	21.10.14	Schiffe						
	e	15-0737	14.09.15	Boll	Zeichnungsnummer		2408-009-100-41-0002g		Blatt 1	
	f	16-0620	29.09.16	Boll	DIN		A 4		von 1	
g	20-0407	27.04.20	Denk	Alle Maße in mm, inklusive Oberflächenbehandlung				Ersatz für		